



ACCELERATE **Discovery.**  
AMPLIFY **Returns.**



**The BIO Investor Forum** is an international biotech investor conference dedicated to showcasing drug development programs that are ready for partnering or venture funding and those poised to join the growth “watch list” in 2021. Since its inception 18 years ago, the BIO Investor Forum has become the premier event where biotech innovators can find investors and strategic partners to advance their company to the next stage in their business life cycle.

## Event Attributes and Opportunities

### EXPERIENCE THE BEST OF BIOTECH

with two-days of productive partnering meetings with institutional investors, industry analysts, and senior biotechnology executives, in one location.

### GAIN ACCESS TO BIO ONE-ON-ONE PARTNERING™

for scouting potential investments and deal partners, optimizing your time at the event.

### EVALUATE FRESH INVESTMENT OPPORTUNITIES

including compatible, complementary, and competitive companies.

### UNIQUE PLATFORM FOR YOUR COMPANY

to highlight accomplishments and discuss upcoming milestones. Approximately 170 companies will be chosen based on a selection process evaluating a company's pipeline and R&D activities.

### LEARN ABOUT THE HOTTEST CLINICAL DEVELOPMENTS

and industry catalysts by attending the conference's therapeutic and business-focused panel discussions.

### GET THE PULSE

of the current and proposed investment trends in biotechnology.

### ATTEND FIRESIDE CHATS

with senior business leaders who will share their recent company successes, what keeps the C-suite up at night, and where the industry's leading companies are headed in 2021.

### NETWORK

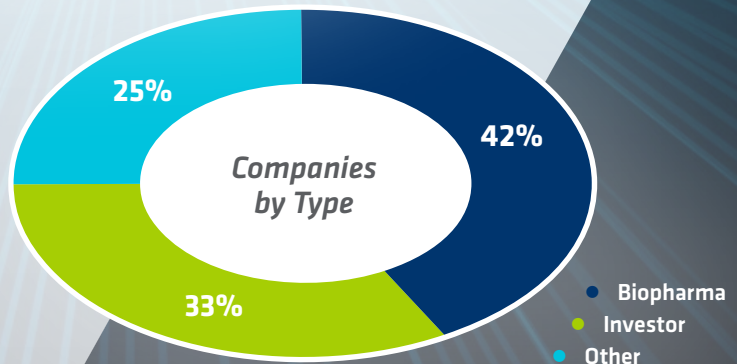
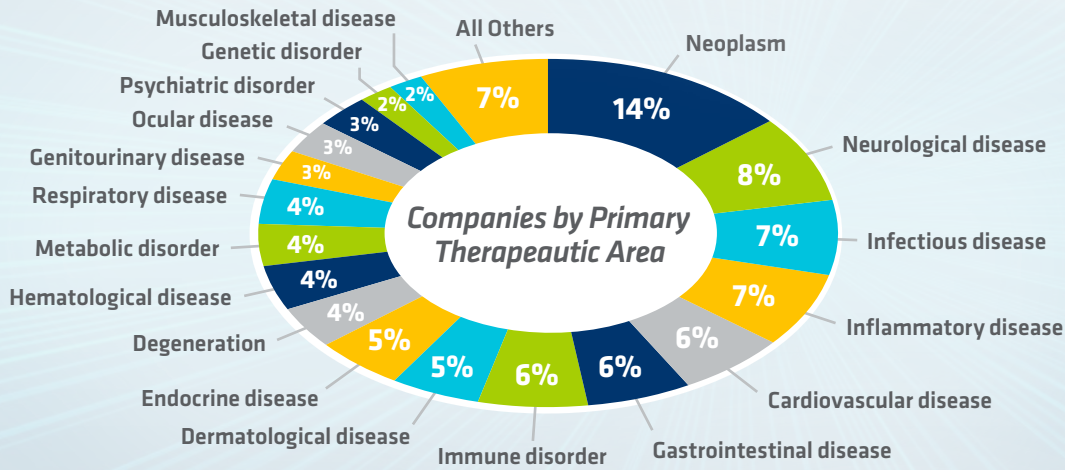
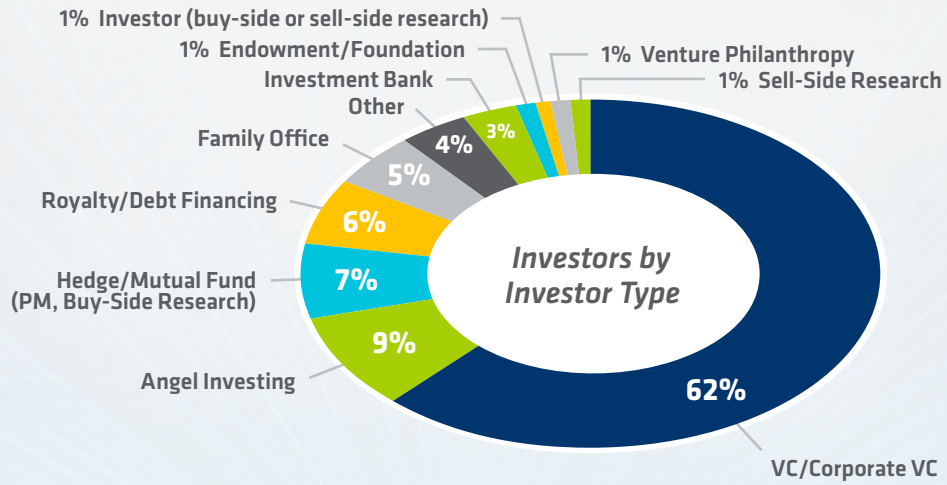
with peers, investors, and potential partners attending the conference and our exclusive receptions.

### EXCLUSIVE SPONSORSHIP OPPORTUNITIES

to showcase thought leadership, elevate brand identity and maximize partnering benefits with an elite audience.

◆◆◆ REGISTRATION WILL OPEN IN SUMMER 2020 ◆◆◆

# Audience Demographics



“ Like being at JPM without the crowds. ”

# BIO Investor Forum at a Glance



**3,150**  
BIO ONE-ON-ONE  
PARTNERING  
MEETINGS



**712**  
COMPANIES  
SHOWCASING DRUG  
DEVELOPMENT

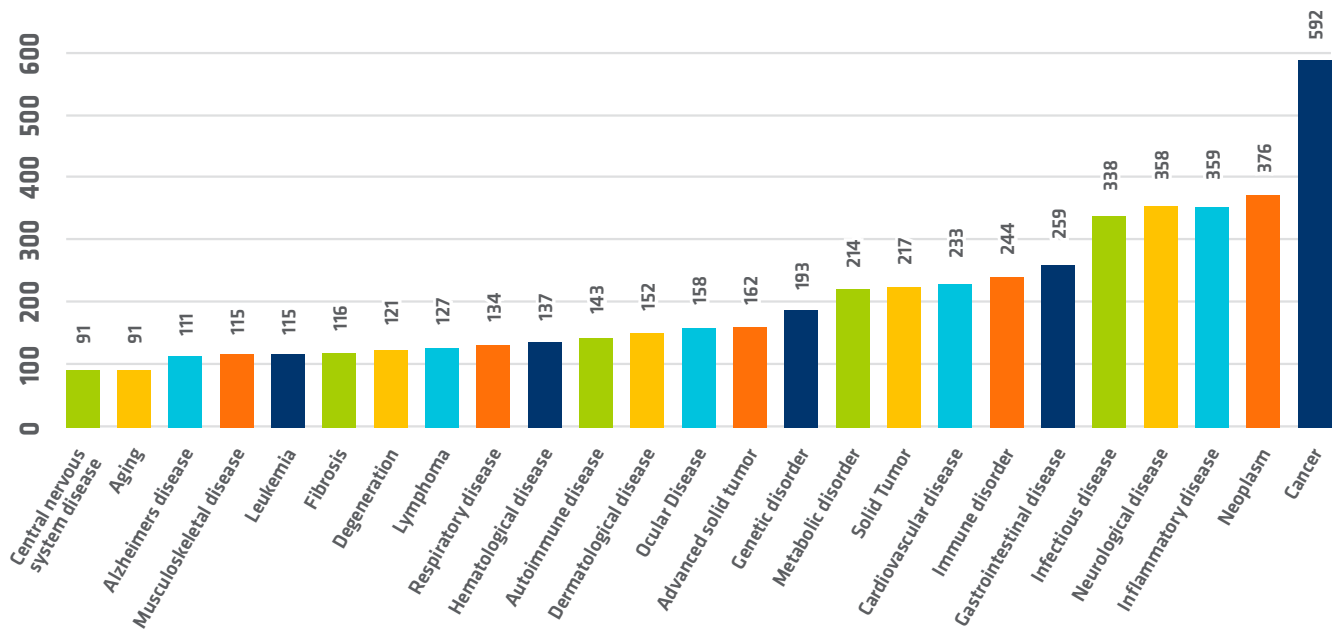


**350**  
EARLY-STAGE  
INVESTORS



**170**  
PRESENTING  
COMPANIES

## TOP THERAPEUTIC AREAS FOR SCHEDULED MEETINGS



# 2019 BIO Investor Forum Program Recap

The event welcomed industry thought leaders discussing the latest in cancer treatments, gene therapies, CNS drug development, molecular diagnostics as well as business themes including board diversity, CFIUS, the IPO market, policy outlook, and investor engagement best practices. Other sessions looked at the ever-increasing digital space including applying artificial intelligence to improve therapy development.



As more biotechnology executives begin to focus on strategies to diversify their boards to avoid groupthink and strengthen corporate governance, an emerging consensus is forming that initial public offerings are a key gateway to assembling higher-performing leadership teams. That was the unanimous consensus of the industry experts who led the panel: **Recruiting Talent to Meet Corporate Board Requirements and Representation Goals**. This topic was especially timely for biotech companies headquartered in California, which became the first state to require that publicly traded corporations include at least one woman on their boards.

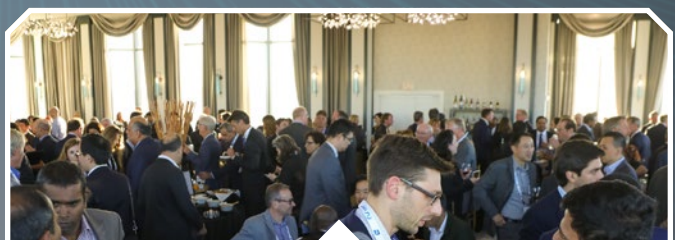


During the panel, **The Next Wave of Cancer Therapies: Allogenic Cell Therapies and Other Pioneers**, Rafael Amado, MD, Allogene and others reviewed emerging treatment options in cancer, including the next wave of CAR-T, NK cell, and other pioneering approaches, highlighting promises enabled by each and the challenges to be resolved on the path to approvals and helping patients worldwide.

The opening plenary, **Public Policy Outlook on Biotech Investment in China**, featuring Helen Chen with L.E.K. Consulting and James Huang, Kleiner Perkins Caufield & Byers China; Panacea Venture, explored how biotech companies can continue to raise capital, the proposed rulemaking from CFIUS in the coming months, and a pathway for companies to remain innovative while CEOs and investors navigate these changes.



**Fireside Chat** with Lon Cardon, PhD, Chief Strategy Officer, BioMarin



Day one of the event wrapped up with a **networking reception for all attendees** on the top floor of the Tower Building at the Westin St. Francis.

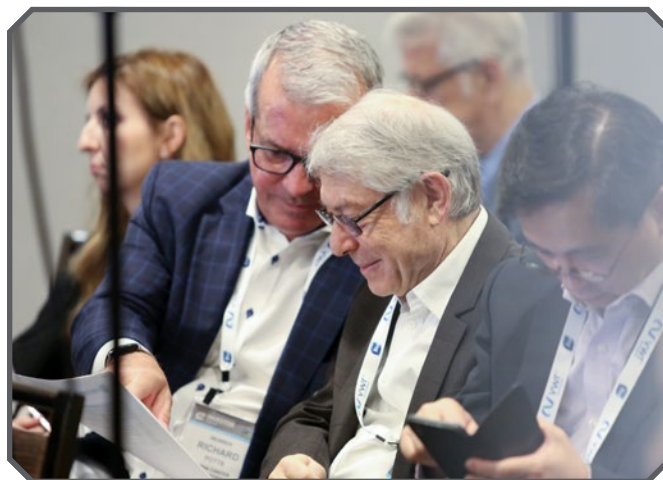
The session, **Advice on Pitching Family Offices, Venture Philanthropies, and Other Non-Private Equity Funding Sources**, featured experienced voices, including Reza Halse, MRLV, and Charlotte Hubbert, Gates Foundation Venture Capital, among others, explaining the strategies to employ and properly satisfy a potential investor's expectation and secure the desired capital.



# 2019 Participating Investors

Below is a representative list of participating investment firms and sell side research analysts for the 2019 BIO Investor Forum.

- |                                    |  |                                 |                                       |
|------------------------------------|--|---------------------------------|---------------------------------------|
| 3E Bioventures                     | DAYLI Partners                               | MedImmune Ventures              | Santen Pharmaceutical Co.             |
| AbbVie                             | DCVC Bio                                     | Milestone Capital               | Santen Ventures                       |
| ABES Venture Partners              | Deftha Partners                              | Mitsui & Co. Global Investment  | Satter Medical Technology Partnership |
| Abingworth Management              | DHVC   | Momentum Biotech                | Shanghai Henlius Biotech              |
| Accelerator Life Science Partners  | DigiTx Partners                              | MPM Capital                     | Shenzhen Salubris Pharmaceuticals     |
| Acuris Partners                    | Dolby Family Ventures                        | MSQ Ventures                    | Simcere Pharmaceutical Group          |
| Adjuvant                           | Dorset Capital                               | MyBioGate                       | Sinar Mas Technology                  |
| Agent Capital                      | DoubleLine Capital                           | Nan Fung Life Sciences          | Sofinnova Ventures                    |
| Agilent Technologies               | Dynamk Capital                               | NanoDimension                   | SPRIM Ventures                        |
| Aleph Capital                      | East West Bank                               | NCL Technology Ventures         | SR One                                |
| Alexandria Venture Investments     | Eisai  | New Enterprise Associates (NEA) | StarLink Capital                      |
| Alignment Ventures                 | Emerson Collective                           | Nomura Instinet                 | StartUp Health                        |
| Altamont Pharmaceutical Holdings   | Esousa Holdings                              | Northern Light Venture Capital  | Steel Wolf Ventures                   |
| Altitude Life Science Ventures     | FMG Ventures                                 | Novo Ventures (US)              | Taiho Ventures                        |
| Andreessen Horowitz                | F-Prime Capital Partners                     | OCV                             | Taiwania Capital                      |
| Aquilo Capital                     | Fujifilm Diosynth Biotechnologies            | Olive Tree Capital              | Takeda Ventures                       |
| Arch Venture Partners              | G4S Capital                                  | Oresund Capital                 | Talfinium Investments                 |
| Arix Bioscience                    | GE Ventures                                  | OSF Healthcare Ventures         | The Benchmark Company                 |
| ARTIS Ventures                     | Genoa Ventures                               | Otsuka Pharmaceutical Co.       | The Leukemia & Lymphoma Society       |
| Asahi Kasei America                | Global Neurohealth Ventures                  | Oxford Finance                  | Tosoh USA                             |
| Asajes Medical                     | GreenSky Capital                             | Palo Alto Investors             | TransPacific Venture Capital Partners |
| Asajes Ventures                    | Grey Sky Venture Partners                    | Panacea Venture Healthcare      | Triple Ring Technologies              |
| Asset Management Ventures          | Hannol Ventures                              | Pappas Ventures                 | Ultrum Capital                        |
| Astellas Innovation Management     | Hbm Partners                                 | Perserverance Capital           | VantagePoint Capital Partners         |
| Astellas Pharma US                 | HCM Healthcare Capital Management            | Pharmstandard JSC               | venBio Partners                       |
| Astellas Venture Management        | HealthCare Royalty Partners                  | Pivotal BioVenture Partners     | Vertex Venture Holdings               |
| ATEL Ventures                      | HEDA Ventures                                | PoC Capital                     | Vivo Capital                          |
| Atheneos Ventures                  | Helicase Venture                             | Premier Partners                | Voya Financial                        |
| Band of Angels                     | Helix Ventures                               | Presidio Partners               | W Global Capital                      |
| Barbara Lavery                     | Hemi Ventures                                | Prevail Partners                | WARF Therapeutics                     |
| Beacon Capital                     | Hercules Capital                             | Primer Capital                  | Washington Research Foundation Center |
| Biocoast Capital                   | Hone Capital                                 | Qiming Venture Partners VSA     | WBB Securities                        |
| Bioldeations                       | Iaso Ventures                                | Quadriga Biosciences            | Westlake Ventures                     |
| Biomark Capital                    | illumina Accelerator                         | Quan Capital                    | WI Harper Group                       |
| BioPacific Investors               | illumina Ventures                            | RBV Capital                     | Xeraya Capital Life Venture           |
| Bios Partners                      | In Capital                                   | Relentless Pursuit Partners     | Y Combinator                          |
| Biotech Alliances International    | Inbio Ventures                               | Remiges Ventures                | Yonjin Capital                        |
| Bohe Angel Fund                    | INCJ   | Research Bridge Partners        | Yuhan USA                             |
| Borex Capital                      | Integral Group                               | Roche Venture Fund              | ZCC Capital                           |
| Boryung Holdings                   | Intuitive                                    | Sanderling Ventures             | ZJ Future                             |
| BOSON Capital Partners             | IPF Partners                                 | Sandhill Angels                 |                                       |
| Brace Pharma Capital               | JHBio  | Sanofi                          |                                       |
| Brain Trust Accelerator Fund       | Johnson & Johnson Development Corporation    |                                 |                                       |
| BridgeBio Pharma                   | Joyance Partners                             |                                 |                                       |
| BTIG                               | Julz Co                                      |                                 |                                       |
| Canadian Imperial Bank of Commerce | Juvenile Diabetes Research Foundation (JDRF) |                                 |                                       |
| Capital Family Office              | KB Financial Group                           |                                 |                                       |
| Cato BioVentures                   | Kyoto University Innovation Capital          |                                 |                                       |
| CEC Capital                        | Laguna Ventures                              |                                 |                                       |
| Cenova Capital                     | Laurel Venture Capital                       |                                 |                                       |
| Chaperone Investment               | Life Science Angels                          |                                 |                                       |
| China Grand                        | Lilly Asia Ventures                          |                                 |                                       |
| CI Investments                     | Lincoln Park Capital                         |                                 |                                       |
| Cipla                              | Lumira Ventures                              |                                 |                                       |
| Coventry Enterprises               | Lyfe Capital                                 |                                 |                                       |
| Cowin Capital                      | Lymo Ventures                                |                                 |                                       |
| Crosswave Management               | LYZZ Capital Advisors                        |                                 |                                       |
| CRV                                | Matthews Asia                                |                                 |                                       |
| CSC Leasing                        | Matthews International Capital Management    |                                 |                                       |
| Dabar Investment Associates        | Maywell Capital                              |                                 |                                       |
| Dalton Investment                  | MDB Capital Group                            |                                 |                                       |
| Danaher Life Sciences              |  |                                 |                                       |
| Data Collective Venture Capital    |  |                                 |                                       |



# 2019 Participating Companies

360MEDLINK  
712 North  
A2A Pharmaceuticals  
Abalone Bio  
Abreos Biosciences  
Accelero Biostructures  
Accutis  
Acquist Therapeutics  
ACS Brightedge Fund  
ACT Genomics  
Actinium Pharmaceuticals  
ActoBio Therapeutics  
Adviance Technologies  
Aethlon Medical  
Ahead Therapeutics SL  
AIMM Therapeutics  
AiVita Biomedical  
Allen Institute For Brain Science  
Allogene Therapeutics  
Alpha Cancer Technologies  
Alpine Immune Sciences  
Altimmune  
American Gence Technologies International  
Amma Therapeutics  
Amnicell  
AMPsource Biopharma  
AMRA Medical  
Amygdala Neurosciences  
Anima Biotech  
Annexon Biosciences  
Antev  
Antidote Technologies  
Aon Risk Solutions  
Aposense  
Arcturus Therapeutics  
Ardigen  
Aristea Therapeutics  
Aro Biotherapeutics  
Aspect Biosystems  
AstraZeneca  
Attentive Therapeutics  
Auransa  
Aurora Bio  
Avail Bio  
Avails Medical  
Avisa Pharma  
AxeroVision  
Bastion Biologics  
BCell Solutions  
Bilix  
Bill and Melinda Gates Foundation  
BioCentury  
BioMarker Strategies  
BioMotiv  
BioSuperior Technology

Bioceed Innovation Hub  
BioXcel Therapeutics  
Bipharm  
Bird Rock Bio  
BlackThorn Therapeutics  
Bloom Science  
Boundless Bio  
Brava Diagnostics  
Breakthrough Genomics  
BridgeBio Pharma  
BridGene Biosciences  
Bristol-Myers Squibb Company  
Business France  
California Institute for Regenerative Medicine  
Cambia Grove  
Canaccord Genuity  
Cantabio Pharmaceuticals  
Cardiogas Technologies  
Caribou Biosciences  
Carmell Therapeutics  
Catalyst Pharmaceuticals  
Cell Care Therapeutics  
Celularity  
Century Therapeutics  
Cerevance  
CerSci Therapeutics  
Cesca Therapeutics  
Chubb  
Circle Pharma  
Circumvent  
City of Hope  
Click Therapeutics  
Clinical Network Services (CNS)  
CODA Biotherapeutics  
CohBar  
Common Pharma  
Contraline  
Correlia Biosystems  
Cortexyme  
Corvidia Therapeutics  
Courier Therapeutics  
Cue Biopharma  
Cystic Fibrosis Foundation  
CytoDyn  
Cytonus Therapeutics  
Cytovia Therapeutics  
Da Volterra  
Dalriada Therapeutics  
Dalton Bioanalytics  
Daré Bioscience  
Deallus Consulting  
DeBiopharm International  
Deciduous Therapeutics  
Decoy Biosystems  
Deep Lens

DelNova  
Delta-Fly Pharma  
Demuris  
Dia-beat-it  
DNALite Therapeutics  
DOTBIO  
Drusolv Therapeutics  
Dyadic International  
Dyve Biosciences  
EA Pharma  
Economic Development Agency Brandenburg  
Edesa Biotech  
Elevian  
Elex Biotech  
Eli Lilly and Company  
EngineBio  
Engrail Therapeutics  
Ensysce Biosciences  
EnterTroy Bio  
Epic Sciences  
Epilepsy Foundation  
Equillium  
Espero BioPharma  
ethris GmbH  
Eureka Therapeutics  
Evaluate  
Excure  
Exxel Pharma  
Facile Therapeutics  
Fellow Health  
Fenologica Biosciences  
Fibrocell Science  
First Light Diagnostics  
Foresee Pharmaceuticals  
Fortress Biotech  
Galimex Therapeutics  
Gel4Med  
GLAdiator Biosciences  
GlobalConnectWorks  
GlobalData  
GlyTech  
Golden Biotechnology Corp.  
Greenwich LifeSciences  
H.C. Wainwright & Company  
Halloran Consulting Group  
Halo Biosciences  
Haystack Sciences  
Heartseed  
Helixmith Co.  
Hercules Capital  
Histogen  
Honeylab  
Hyaloric Biotech  
Hygieia Biological Laboratories  
IACTA Pharmaceuticals

Illumina Ventures  
Ilya Pharma  
ImmunoMet Therapeutics  
Immunophotonics  
Impact Therapeutics  
Impel NeuroPharma  
IMV  
InCarda Therapeutics  
Incysul Therapeutics  
Informa  
InMed Pharmaceuticals  
Innofly Management  
Innovate Biopharmaceuticals  
Intabio  
Interface Biologics  
InterVenn Biosciences  
InveniAI  
Inversago Pharma  
Invivo Sciences  
ISOThrive  
Jaun Biotherapeutics  
JT Pharma  
Kaléo Pharma  
Kedalion Therapeutics  
Kelun Pharmaceuticals  
Kezar Life Sciences  
Kineta  
Kinosis Therapeutics  
Kissei America  
Kleo Pharmaceuticals  
KPI Therapeutics  
Kyorin USA  
L.E.K. Consulting  
Landos Biopharma  
LaVoieHealthScience  
Leibniz Institute on Aging  
Leidos  
Lempo Therapeutics  
Lexent Bio  
LIPAC Oncology  
Locana  
Locust Walk  
Lonza Pharma & Biotech  
LSA  
Lung Therapeutics  
Lunit  
Lynx Biosciences  
MacDougall Biomedical Communications  
MAIA Biotechnology  
Mammoth Biosciences  
Mandalmed  
Mantra Bio  
MaxCyte  
Medsavana  
Membio



## 3,150

**BIO ONE-ON-ONE PARTNERING MEETINGS  
TOOK PLACE OVER THE TWO-DAY EVENT**

## 2019 Participating Companies, CONTINUED

Merck KGaA	OncoSenX	Sisu Pharma	UC Davis-Office of Research
Metcela	Opiant Pharmaceuticals	SmartPharma Therapeutics	Ultivue
MetVital	Opus Biotech Communications	Sofinnova Ventures	University of California, Davis
MicroRadical 360	Oragenics	Spectrum Pharmaceuticals	University of California, San Francisco
Mitsubishi Tanabe Pharma	Orion Biotechnology	SpinalCyte, LLC	University of Colorado Anschutz
MMSC	OrthoMed	Splash Pharmaceuticals	Medical Campus
Molecular Theranostics	Orthopaedic Research and Education	Stanford SPARK Program	University of Michigan
Monash University	Foundation	Stanford University	University of Oslo
Morphocell Technologies	OrthoTrophix	Sterling Bay	University of Texas at Austin
Morrison & Foerster	OxSonic Therapeutics	Stero Therapeutics	University of Texas, MD Anderson
MUSC Foundation for Research	OxStem Limited	Structure Based Design	Cancer Center
Development	Pacylex Pharmaceuticals	Summit Therapeutics	University of the Sunshine Coast
Mycovia Pharmaceuticals	PAION AG	Surozen	Clinical Trials Centre
Nammi Therapeutics	Panjab University	Symvivo Corporation	University of Tsukuba
Nanostics	Paras Biopharmaceuticals Finland Oy	SynDevRx	University of Utah TVC
National Institutes of Health, NHLBI	Phanes Therapeutics	Synthetic Biologics	Univfy
National Taiwan University College of	Phenomic AI	SyntheX	Unnatural Products
Medicine	Phosplatin Therapeutics	Tampere University	Valitor
Navidea BioPharmaceuticals	Privo Technologies	TargetGene Biotechnologies	Valley Fever Solutions
Navigant Consulting	Proteina	Technology Venture	Valtari Bio
Navigen Pharmaceuticals	Quadrige Biosciences	Commercialization	Vaporox
NB Health Laboratory	Rafael Pharmaceuticals	TEGA Therapeutics	Varsona Pharmaceuticals
NDA Group	Rakuten Medical Japan K.K.	Teikoku Pharma USA	VelosBio
Nelum	Rejuvenation Technologies	Tempo Therapeutics	Venture Valuation
NeOnc Technologies	Resverlogix Corporation	Terran Biosciences	Vida Strategic Partners
Neumentum	Retrotope	Terumo BCT	viDA Therapeutics
NeuroBo Pharmaceuticals	Riptide Bioscience	The Money Channel NYC	Vigeo Therapeutics
Neurocycle Therapeutics	Rubryc Therapeutics	The University of Chicago	Viramal
Neuroscience Trials Australia	SAB Biotherapeutics	The University of Texas MD Anderson	Vistara Biosciences
Neuroscientific Biopharmaceuticals	Sapience Therapeutics	TheraTarget	VitriVax
New Orleans Business Alliance	Satellos Bioscience	ThinkCyte	VM Oncology
New5win	Satsuma Pharmaceuticals	Thrombo Therapeutics	Vona Oncology
Nikon Instruments	SCIBAC	Tierra Biosciences	Vybio
Nkarta Therapeutics	Seelos Therapeutics	TIGAR Health	Wenbli Therapeutics
North Carolina Biotechnology Center	SEngine Precision Medicine	Torreya	Wheelhouse
Novelogs Biotechnology	SENS Research Foundation	Tosk	xCella Biosciences
Novotech	Senti Biosciences	Traffic Therapeutics	Xoc Pharmaceuticals
Nucleus Network	Sentien Biotechnologies	Tranquis Therapeutics	Xontogeny
NuvOx Pharma	Serimmune	Trilogy Therapeutics	X-Therma
Okava Pharmaceuticals	SFA Therapeutics	Triurus Therapeutics	Yiviva
Omada Health	ShareVault	TrovaGene	Zenith Epigenetics
Oncolytics Biotech	Shifa Biomedica Corporation	True Bearing Diagnostics	Zenopharm
Oncolyze Therapeutics	Shinkei Therapeutics	Tulane University School of Medicine	
Oncomatrix Biopharma	Siragen Pharmaceuticals	U.S. Pharmacopeial	

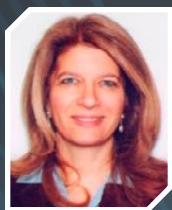
## 2020 Planning Timeline

June – July	August – September	October
<ul style="list-style-type: none"> <li>Registration Opens</li> <li>BIO Discount Housing Block Opens</li> <li>Apply for a Company Presentation</li> </ul>	<ul style="list-style-type: none"> <li>Early Bird Registration Rate Ends</li> <li>Buzz of BIO Competition</li> <li>BIO One-on-One Partnering Opens</li> </ul>	<ul style="list-style-type: none"> <li>BIO Investor Forum, Westin St. Francis Hotel</li> </ul>

## 2019 Advisory Committee



**Mahima Agochiya, PhD**  
*Business Development & Program Manager*  
**SPARK Translational Research Program, Stanford University**



**Janice Bourque**  
*Managing Director, Life Sciences*  
**Hercules Technology Growth Capital**



**Jason Camm**  
*Managing Director and Chief Medical Officer*  
**Thiel Capital LLC**



**Alice Chen, PhD**  
*Vice President*  
**Accelerator Life Science Partners**



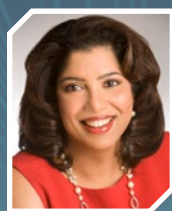
**Jung Choi**  
*Chief Business & Strategy Officer*  
**Global Blood Therapeutics**



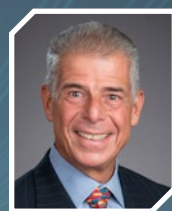
**Shelley Chu, MD, PhD**  
*Partner*  
**Abingworth**



**Rajeev Dadoo, PhD**  
*Partner*  
**S.R. One Limited**



**Gini Deshpande, PhD**  
*Founder & Chief Executive Officer*  
**NuMedii**



**Jack Florio**  
*Partner, Strategy Consulting Practice*  
**Deallus**



**Julie Gilmore, PhD**  
*Chief Operating Officer, Lilly Research Labs*  
**Eli Lilly and Company**



**Tao Huang, PhD, JD**  
*Venture Partner*  
**Cenova Capital**



**Charlotte Hubbert, PhD**  
*Partner*  
**Gates Foundation Venture Capital**



**Alexis Ji, PhD**  
*Partner*  
**Illumina Ventures**



**Margaret Kim**  
*Executive Director, Life Sciences*  
**JPMorgan Chase & Co.**



**Ravi Kiron, PhD**  
*Head, BioPharma External Innovation*  
**EMD Serono**



**Jennifer Landress**  
*Senior Vice President and Chief Operating Officer*  
**Biocom**



**Bill Martin, PhD**  
*President and Chief Operating Officer*  
**Blackthorn Therapeutics**



**Samantha Miller, MSc, MBA**  
*Co-Founder and Chief Operating Officer, Cadence Health; Chief Business Officer InCarda Therapeutics*

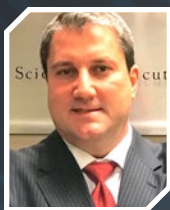


**Carolyn Ng, PhD**  
*Managing Director*  
**Vertex Ventures HC**



**Peter Noymer, PhD**  
*Former President and CEO*  
**Kedalion Therapeutics; Independent Advisor**

## 2019 Advisory Committee, CONTINUED



**Stephen Ritoch**  
Chairman &  
Chief Executive Officer  
Blaise Group International



**John Ryan**  
Managing Director  
Wells Fargo Strategic Capital



**Andrew Setikas**  
Senior Vice President, Business  
Development and Strategy  
California Life Sciences  
Association



**Mahendra G. Shah, PhD**  
Managing Director  
Vivo Capital



**Ruchita Sinha**  
Senior Director of Investments  
Sanofi Ventures



**Komathi Stem**  
Founder & Chief  
Executive Officer  
monARC Bionetworks



**Samuel Wu, MD, PhD**  
Managing Director  
Acuris Partners



**Asish Xavier, PhD**  
Vice President,  
Venture Investments  
Johnson & Johnson  
Innovation - JJDC, Inc.



Member

BIO Members enjoy a significant discount on conference registration rates. BIO is the only global organization that brings together biotech innovators focused on accelerating the progress of new therapeutic technologies into commercialization and treating patients.

## 2019 Sponsors

### DOUBLE HELIX SPONSORS










### SUPPORTING BANK SPONSOR



### CONFERENCE SPONSORS



# Sponsorship Opportunities & Benefits Breakdown

	Price (USD)	Number of Registrations	Recognition on Conference Website, Materials and Signage	Access to BIO One-on-One Partnering	Partnering Suite and Priority Scheduling of Meetings	Guaranteed Speaking Opportunity
<b>Showcase Thought Leadership</b>						
 Program Sponsor	\$25,000	3	✓	✓	✓	✓
 Company Presentations Sponsor	\$20,000	2	✓	✓		
<b>Access Your Target Audience</b>						
 Welcome Reception Sponsor	\$17,500	2	✓	✓		
 Hospitality Sponsor	\$15,000	2	✓	✓		
 BIO SPARK Showcase Reception Sponsor	\$12,500	2	✓	✓		
 BIO Showcase Tabletop Exhibit Sponsor	\$7,500	1	✓			
<b>Maximize Partnering &amp; Deal Making</b>						
 BIO One-on-One Partnering System Sponsor	\$20,000	3	✓	✓	✓	
 Partnering Suite Sponsor	\$17,500	2	✓	✓	✓	
 Partnering Lounge Sponsor	\$12,500	2	✓	✓	✓	
<b>Boost Brand Visibility</b>						
 Conference Bag Sponsor	\$17,500	2	✓	✓		
 Lanyard Sponsor	\$15,000	2	✓	✓		
 WiFi Sponsor	\$12,500	2	✓	✓		
 Buzz of BIO Contest Sponsor	\$7,500	1	✓			
 Social Media Sponsor	\$7,500	1	✓			
 Daily Buzz Email Sponsor	\$7,500	1	✓			

Our Sales & Sponsorship team is always ready to support your event engagement. Please feel free to reach out to the team at [+1.202.312.9264](tel:+1202.312.9264) or [sponsor@bio.org](mailto:sponsor@bio.org).



# Showcase Thought Leadership

## PROGRAM SPONSOR

Subject to Availability ..... \$25,000 USD

- Three (3) complimentary registrations
- One (1) guaranteed speaking opportunity on program (to be determined based on program development)
- One (1) dedicated partnering suite to be used for BIO One-on-One Partnering meetings
- Dedicated BIO staff to provide support and optimize scheduling of BIO One-on-One Partnering meetings
- Access to BIO One-on-One Partnering
- Opportunity to display materials in sponsor literature area
- Recognition as a sponsoring organization on conference website, materials and signage

## COMPANY PRESENTATIONS SPONSOR

Exclusive ..... \$20,000 USD

- Two (2) complimentary registrations
- Sponsor recognition on company presentation signage and materials
- Ability to introduce up to fifteen (15) company presentations
- Access to BIO One-on-One Partnering
- Opportunity to display materials in sponsor literature area
- Recognition as a sponsoring organization on conference website, materials and signage



## Access Your Target Audience

### WELCOME RECEPTION SPONSOR

Exclusive ..... \$17,500 USD

- Two (2) complimentary registrations
- Sponsor recognition at Welcome Reception
- Five (5) tickets for guests to attend the Welcome Reception
- Access to BIO One-on-One Partnering
- Opportunity to display materials in sponsor literature area
- Recognition as a sponsoring organization on conference website, materials and signage

### BIO SHOWCASE TABLETOP EXHIBIT SPONSOR

Three (3) Available ..... \$7,500 USD

- One (1) complimentary registration
- One (1) dedicated 6' tabletop exhibit space within the main congregating area of the conference (Includes table and two chairs. Tablecloth and promotional materials to be provided by the sponsor.)
- Opportunity to display materials in sponsor literature area
- Recognition as a sponsoring organization on conference website, materials and signage

### HOSPITALITY SPONSOR

Exclusive ..... \$15,000 USD

- Two (2) complimentary registrations
- Sponsor recognition during breakfasts, lunches and breaks
- Access to BIO One-on-One Partnering
- Opportunity to display materials in sponsor literature area
- Recognition as a sponsoring organization on conference website, materials and signage

### BIO SPARK SHOWCASE RECEPTION SPONSOR

Exclusive ..... \$12,500 USD

- Two (2) complimentary registrations for the BIO Investor Forum  
**Note: Registration to BIO Investor Forum provides complimentary access to BIO SPARK Showcase**
- Sponsor recognition at BIO SPARK Showcase Reception
- Three (3) tickets for guests to attend the BIO SPARK Showcase Reception
- Access to BIO One-on-One Partnering
- Opportunity to display materials in sponsor literature area
- Recognition as a sponsoring organization on conference website, materials and signage





# Maximize Partnering & Deal Making

## BIO ONE-ON-ONE PARTNERING SYSTEM SPONSOR

Exclusive ..... \$20,000 USD

- Three (3) complimentary registrations
- Sponsor recognition on BIO One-on-One Partnering™ system, partnering terminals and printed partnering schedules
- One (1) dedicated partnering suite to be used for BIO One-on-One Partnering meetings
- Dedicated BIO staff to provide support and optimize scheduling of BIO One-on-One Partnering meetings
- Access to BIO One-on-One Partnering
- Opportunity to display materials in sponsor literature area
- Recognition as a sponsoring organization on conference website, materials and signage

## PARTNERING LOUNGE SPONSOR

Exclusive ..... \$12,500 USD

- Two (2) complimentary registrations
- Sponsor recognition in Partnering Lounge, located on the main partnering floor (Coffee service and comfortable furniture provided by BIO)
- Ability to display promotional materials within the Partnering Lounge
- Access to BIO One-on-One Partnering
- Opportunity to display promotional materials on sponsor literature kiosk in the main conference ballroom
- Recognition as a sponsoring organization on conference website, materials and signage

## PARTNERING SUITE SPONSOR

Subject to Availability ..... \$17,500 USD

- Two (2) complimentary registrations
- One (1) dedicated partnering suite to be used for BIO One-on-One Partnering meetings
- Dedicated BIO staff to provide support and optimize scheduling of BIO One-on-One Partnering meetings
- Access to BIO One-on-One Partnering
- Opportunity to display materials in sponsor literature area
- Recognition as a sponsoring organization on conference website, materials and signage



## Boost Brand Visibility

### CONFERENCE BAG SPONSOR

Exclusive ..... \$17,500 USD

- Two (2) complimentary registrations
- Sponsor recognition on conference bags (conference and/or BIO logo also included); conference bags distributed to conference attendees
- Access to BIO One-on-One Partnering
- Opportunity to display materials in sponsor literature area
- Recognition as a sponsoring organization on conference website, materials and signage

### WIFI SPONSOR

Exclusive ..... \$5,000 USD

- Two (2) complimentary registrations
- Sponsor recognition on WiFi related materials
- Access to BIO One-on-One Partnering
- Opportunity to display promotional materials on sponsor literature kiosk in the main conference ballroom
- Recognition as a sponsor on conference website and signage

### LANYARD SPONSOR

Exclusive ..... \$15,000 USD

- Two (2) complimentary registrations
- Sponsor recognition on lanyards; lanyards distributed to conference attendees
- Access to BIO One-on-One Partnering
- Opportunity to display materials in sponsor literature area
- Recognition as a sponsoring organization on conference website, materials and signage

### BUZZ OF BIO CONTEST SPONSOR

Exclusive ..... \$7,500 USD

- One (1) complimentary registration
- Sponsor recognition on Buzz of BIO webpage and on all contest materials
- BIO to recognize sponsor in two (2) dedicated Buzz of BIO tweets and in email promotion for the contest
- Ability to introduce Buzz of BIO winner during their company presentation
- Opportunity to display materials in sponsor literature area
- Recognition as a sponsoring organization on conference website, materials and signage

## SOCIAL MEDIA SPONSOR

Exclusive .....\$7,500 USD

- One (1) complimentary registration
- Pre-conference social media collaborations and co-promotion with BIO (content to be developed by BIO and sponsor)
- Dedicated tweets during the conference with links to sponsor's website with visibility to 2,800 followers
- Opportunity to display materials in sponsor literature area
- Recognition as a sponsoring organization on conference website, materials and signage

---

## DAILY BUZZ EMAIL SPONSOR

Two (2) Available .....\$7,500 USD

- One (1) complimentary registration
- Sponsored content in Daily Buzz featuring sponsor provided image and text
- Opportunity to display materials in sponsor literature area
- Recognition as sponsoring organization on conference website, materials and signage

Our Sales & Sponsorship team is always ready to support your event engagement. Please feel free to reach out to the team at **+1.202.312.9264** or **[sponsor@bio.org](mailto:sponsor@bio.org)**.